

**Forest Products Development
&
Marketing Council
of Guyana, Inc.**

Market/Export Report

October 2013



Produced By

**Forest Products Development & Marketing
Council of Guyana, Inc. (FPDMC)
17 Access Road, Kingston
Georgetown.
Tel #: 592-223-5135-6**

**Email: info@fpdmcguy.org
Website: www.fpdmcguy.org**



TABLE OF CONTENT

1. SUMMARY OF MONTH PERFORMANCE	3
2. OVERVIEW OF EXPORTS FOR THE CURRENT PERIOD OF THE YEAR AS AGAINST THE PREVIOUS YEAR.	4
FPDMC Overview Summary Charts	5
3.0 ANALYSIS OF PRODUCTS EXPORTED BY DESTINATION	5
3.1. LOG EXPORT	6
Analysis of Quantity and Value	6
3.2. SAWNWOOD EXPORTS	7
DRESSED SAWN LUMBER EXPORT	7
Analysis of Quantity and Value	7
UNDRESSED SAWN LUMBER EXPORT	8
Analysis of Quantity and Value	8
3.3 ROUNDWOOD and FUELWOOD EXPORTS	9
Piles: Analysis of Quantity and Value	10
Posts: Analysis of Quantity and Value	10
Poles: Analysis of Quantity and Value	10
Charcoal: Analysis of Quantity and Value	10
3.4 SPLITWOOD (SHINGLES) EXPORT	11
Analysis of Quantity and Value	11
3.5 PLYWOOD EXPORT	12
Analysis of Quantity and Value	12
3.6 OTHER VALUE ADDED PRODUCTS	13
Analysis of Quantity and Value	13 -14
REFERENCES	15

1. Summary of Month Performance

Quantity & Value of forest products exported for October 2013 compared to September 2013

Product	Unit	October 2013			September 2013		
		Quantity	Total Value US\$	% of Total	Quantity	Total Value US\$	% of Total
Logs	m ³	8,674.41	1,137,986.18	31.07	2,716.57	336,975.18	10.32
Lumber- Dressed	m ³	607.93	673,124.99	18.38	819.68	958,086.45	29.33
Lumber - Undressed	m ³	979.27	673,737.07	18.40	1,634.68	1,006,075.95	30.80
Sawnwood (Dr & Und)		1,587.20	1,346,862.06		2,454.36	1,964,162.40	
Plywood	m ³	505.15	250,810.40	6.85	337.88	178,560.02	5.47
Wallaba Poles	m ³	218.72	175,657.99	4.80	36.47	5,470.50	0.17
Wallaba Posts	m ³	22.92	13,200.00	0.36	0.00	0.00	0.00
Piles	m ³	1,187.03	496,476.61	13.56	1,495.45	570,201.17	17.46
Charcoal	m ³	652.80	15,781.25	0.43	700.54	16,280.09	0.50
Shingles	m ³	174.41	191,420.00	5.23	134.04	112,287.00	3.44
Indoor furniture	pcs	5.00	980.00	0.03	0.00	0.00	0.00
Doors	pcs	42.00	17,250.00	0.47	82.00	4,577.71	0.14
Door Components	pcs	0.00	0.00	0.00	0.00	0.00	0.00
Outdoor / Garden Furniture	pcs	0.00	0.00	0.00	0.00	0.00	0.00
Mouldings	m	437.69	868.38	0.02	25,386.49	76,428.57	2.34
Rails	pcs	0.00	0.00	0.00	0.00	0.00	0.00
Spindles	pcs	0.00	0.00	0.00	0.00	0.00	0.00
Spars	m ³	0.00	0.00	0.00	0.00	0.00	0.00
Prefabricated Houses	pcs	0.00	0.00	0.00	0.00	0.00	0.00
Windows	pcs	12.00	3,450.00	0.09	0.00	0.00	0.00
Crafts	pcs	0.00	0.00	0.00	0.00	395.00	0.01
Firewood	m ³	0.00	0.00	0.00	0.00	0.00	0.00
NTFPs	pcs	133.00	11,510.00	0.31	334.00	537.00	0.02
Other Builders Joinery	pcs	0.00	0.00	0.00	0.00	0.00	0.00
Wooden Utensils & Ornaments	pcs	218.00	124.20	0.00	50.00	200.00	0.01
Total			3,662,377.07			3,266,074.64	

2. Overview of exports for the current period of the year as against the previous year.

Quantity & Value of forest products exported Year to date 2013 compared to Year to date 2012

Products	Units	Jan – October 2013			Jan – October 2012		
		Quantity	Value (US\$)	% of total	Quantity	Value (US\$)	% of total
Logs	m ³	52,909.05	8,540,426.06	28.44	71,459.10	11,951,677.83	36.04
Dressed Lumber	m ³	6,334.93	7,405,330.36	24.66	6,727.01	7,920,433.31	23.88
Undressed Lumber	m ³	11,254.37	7,807,941.95	26.00	12,635.67	7,823,192.38	23.59
Plywood	m ³	3,691.95	1,866,613.66	6.22	3,834.61	1935543.53	5.84
Wallaba Poles	m ³	443.33	320,306.41	1.07	377.23	233015.00	0.70
Wallaba Posts	m ³	198.70	85,284.00	0.28	366.72	75,362.56	0.23
Piles	m ³	5,042.50	2,023,012.38	6.74	3,894.26	1,358,039.61	4.10
Charcoal	kg	6,498.08	156,240.04	0.52	7,524.05	172,564.73	0.52
Shingles	m ³	1,467.78	1,418,869.43	4.73	1,628.09	1,457,725.03	4.40
Bedroom Furn / Indoor Furn	pcs	235.00	51,221.33	0.17	137.00	19,321.40	0.06
Crafts	pcs	3,542.00	92,615.33	0.31	4,598.00	6,528.07	0.02
Doors	pcs	957.00	124,963.70	0.42	521.00	49,512.76	0.15
Living Room / Outdoor Furn	pcs	2.00	350.00	0.00	1.00	75.00	0.00
Mouldings	m	27,159.81	78,818.29	0.26	18,787.87	36,534.03	0.11
Rails	m ³	0.00	0.00	0.00	0.00	0.00	0.00
Spindles	pcs	735.00	3,148.03	0.01	598.00	10,279.88	0.03
Staves	pcs	0.00	0.00	0.00	0.00	0.00	0.00
Spars	m ³	0.00	0.00	0.00	0.00	0.00	0.00
Firewood	m ³	0.00	0.00	0.00	39.62	2,800.00	0.01
Door Components	pcs	2.00	80.00	0.00	183.00	4,640.00	0.01
Other builders Joinery	pcs	683.00	15,996.19	0.05	268.00	12,596.00	0.04
Other NTFP's	pcs	1,138.00	18,640.50	0.06	2,474.00	44,103.05	0.13
Windows	pcs	87.00	9,095.00	0.03	155.00	21,355.00	0.06
Prefab Houses	pcs	0.00	0.00	0.00	1.00	12,883.63	0.04
Wooden Utensils & Ornaments	pcs	2,424.00	5,948.72	0.02	5541.00	12,626.15	0.04
Total			30,024,901.38			33,160,808.95	

The contribution of forest products was noteworthy towards the total export earnings for the month of Oct 13. **Sawn lumber** held strong with a positive input of 36.78%; **Logs** made a notable contribution of 31.07%; **Roundwood & Fuelwood** made a solid effort of 19.15%. **Plywood** absorbed a portion of 6.85%; **Splitwood** manage to secure a segment of 5.23%; while **Value Added Products** made a marginal contribution of 0.92%. The month of Oct 13 when compared to the same period of Sept 13 has shown a positive increase in the export of forest products by 12.13%. In the comparative year to date figure of Oct 13 and Oct 12 has recorded a decrease in the total forest export earnings by 9.46%.

FPDMC Overview Summary Charts

Fig 1 – FPDMC market report by monthly comparison (Oct 2013 and Sept 2013)

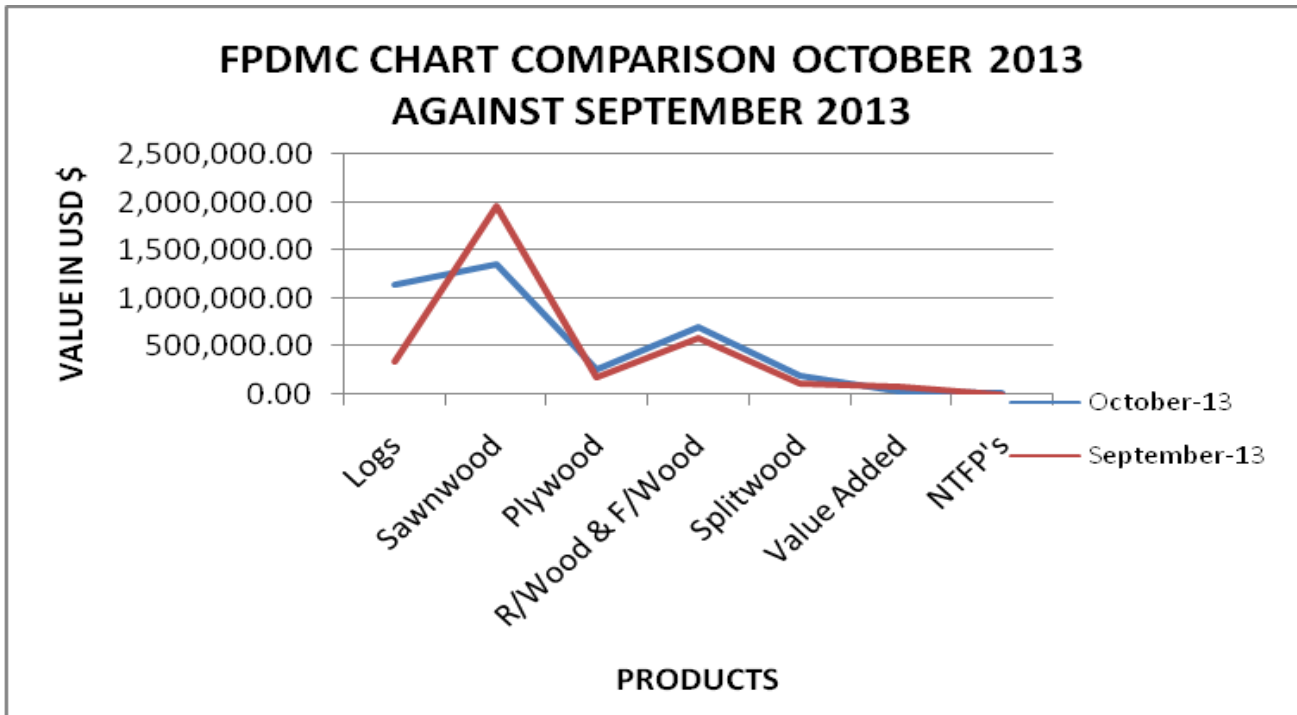
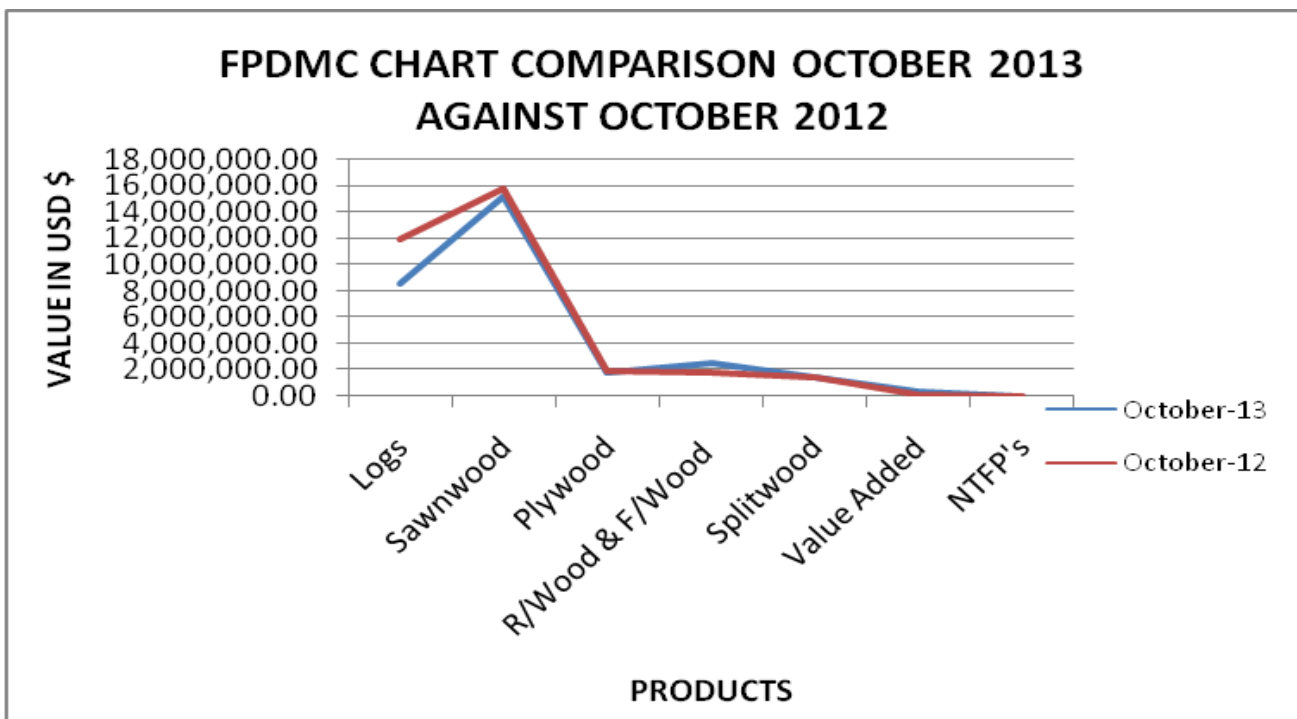


Fig 2 – FPDMC market report by yearly comparison (Oct 2013 and Oct 2012)



3.0 Analysis of Products Exported by Destination

3.1. LOG EXPORT

Analysis of Quantity and Value

During the month of Oct 13 there was notable export of **Logs** on the market which consist of Asia and the Caribbean. The larger market share was occupied by Asia with a significant contribution of total volume 93.34% and total value 93.85%. The Caribbean played a small part of Logs market with an input of total volume 6.66% and total value 6.15%. The month of Oct 13 when compared to the previous period of Sept 13 has recorded a major climb in the export of Logs by total volume 219.31% and total value 237.71%

Volume and Value of Logs exported for Oct 2013

Destination	Volume exported by Country (m ³)	Total Value (US\$)
ASIA		
China	7,989.06	1,050,108.77
Taiwan	108.01	17,854.16
Trinidad & Tobago	577.34	70,023.25
GRAND TOTAL	8,674.41	1,137,986.18

3.2. SAWNWOOD EXPORTS

DRESSED SAWN LUMBER EXPORT

Analysis of Quantity and Value

Dressed Sawn Lumber performance on the export market was fair, offering a valuable contribution towards the total export earnings during the month of Oct 13. During the period under review, the leading market for Dressed Sawn lumber was the Caribbean with a solid contribution of total volume 65.47% and total value 56.33%. North America made a positive contribution with an effort of total volume 23.83% and total value 36.67%. Europe managed to absorb a fair portion of the market with an input of total volume 8.21% and total value 5.54%. Central America secured the remainder of dressed sawn lumber market with a marginal contribution of total volume 2.48% and total value 1.46%. The month of Oct 13 in comparison to the previous period of Sept 13 has revealed a decline in the export of dressed sawn lumber by total volume 25.83% and total value 29.74%.

Dressed Lumber exported for Oct 2013

Destination	Volume exported by Country (m ³)	Total Value (US\$)
CARIBBEAN		
Antigua & Barbuda	14.86	11,110.94
Barbados	174.29	169,306.03
French West Indies	11.20	13,774.88
Grenada	21.11	15,952.00
St. Kitts	25.94	29,146.18
St. Lucia	62.76	56,247.51
St. Vincent	48.24	47,206.25
Trinidad & Tobago	23.41	22,686.37
Virgin Islands (US)	16.22	13,760.00
CENTRAL AMERICA		
Aruba	15.10	9,815.00
EUROPE		
Netherlands	49.94	37,272.50
NORTH AMERICA		
U.S.A	144.86	246,847.33
Grand Total	607.93	673,124.99

UNDRESSED SAWN LUMBER EXPORT

Analysis of Quantity and Value

Undressed Sawn lumber made a fair contribution towards the total export earnings during the month of Oct 13. During this period under consideration, Europe was the largest market segment of undressed sawn lumber with a major contribution of total volume 55.50% and total value 51.04% accounting for more than half of the total market share of this product category. The Caribbean also made a valuable impact on the market with a positive contribution of total volume 24.28% and total value 25.03%. North America occupied a fair segment of the market with an input of total volume 14.73% and total value 18.70%. The remaining markets of Central America and Oceania (New Zealand) combined effort resulted in total volume 5.49% and total value 5.23%. Singlehandedly, United Kingdom achieved the largest market share of Undressed Sawn lumber with total volume 32.78% and total value 32.32%. The month of Oct 13 in comparison to the previous period of Sept 13 has shown a decrease in the export of Undressed Sawn lumber by total volume 40.09% and total value 33.03%.

Undressed Lumber exported for Oct 2013

Destination	Volume exported by Country (m³)	Total Value (US\$)
CARIBBEAN		
Antigua & Barbuda	10.31	6,957.23
Barbados	29.78	31,184.35
Cayman Islands	18.88	24,018.69
Grenada	1.81	1,497.60
Jamaica	33.96	19,350.00
St. Lucia	31.04	17,133.15
St. Vincent	39.56	24,316.50
Trinidad & Tobago	72.47	44,154.61
CENTRAL AMERICA		
Cuba	36.72	16,891.94
EUROPE		
Netherlands	222.41	126,102.00
United Kingdom	321.05	217,749.70
NORTH AMERICA		
U.S.A	144.28	126,021.30
OCEANIA		
New Zealand	17.00	18,360.00
Grand Total	979.27	673,737.07

3.3 ROUNDWOOD and FUELWOOD EXPORTS

Piles: Analysis of Quantity and Value

Piles made a valuable contribution towards the total export earnings during the month of Oct 13. The leading market for this product category was North America which attracted a positive contribution of total volume 89.45% and total value 91.95%. Europe also made a fair offer on the Piles market with an input of total volume 10.55% and total value 8.05%. The month of Oct 13 in contrast to the previous period of Sept 13 has revealed a drop in the export of Piles by total volume 20.61% and total value 12.93%.

Posts: Analysis of Quantity and Value

Posts made a noteworthy contribution towards the total export earnings during the month of Oct 13. There was no comparative period of Oct 13 and Sept 13.

Poles: Analysis of Quantity and Value

Poles recorded a positive growth in the export of Poles during the month of Oct 13. The Caribbean supported Poles with a notable contribution towards the total export earnings. The comparative month of Oct and Sept 13 has shown a significant increase in the export of Poles in both volume and value respectively.

Charcoal: Analysis of Quantity and Value

Charcoal main market was the Caribbean which offered a favourable contribution towards the export earnings during the month of Oct 13. The month of Oct 13 when compared against the same period of Sept 13 has revealed a slight dip in the export of Charcoal by total volume 6.81% and total value 3.06%.

ROUNDWOOD and FUELWOOD EXPORTS (CONT)

Destination	Volume exported by Country (m ³)	Total Value (US\$)
PILES		
EUROPE		
Denmark	13.33	5,789.00
Italy	107.75	31,973.20
Netherlands	4.17	2,184.00
NORTH AMERICA		
USA	1,061.78	456,530.41
Grand Total	1,187.03	496,476.61

Destination	Volume exported by Country (m ³)	Total Value (US\$)
POSTS		
CARIBBEAN		
Antigua & Barbuda	9.12	4,000.00
Martinique	13.80	9,200.00
Grand Total	22.92	13,200.00

Destination	Volume exported by Country (m ³)	Total Value (US\$)
POLES		
CARIBBEAN		
Trinidad & Tobago	218.72	175,657.99
Grand Total	218.72	175,657.99

Destination	Volume exported by Country (m ³)	Total Value (US\$)
CHARCOAL		
CARIBBEAN		
Trinidad & Tobago	598.40	13,781.25
Virgin Islands (British)	54.40	2,000.00
Grand Total	652.80	15,781.25

3.4 SPLITWOOD (SHINGLES) EXPORT

Analysis of Quantity and Value

Shingles performance on the export market was noteworthy and made a positive contribution towards the total export earnings during the month of Oct 13. There were two major markets, the Caribbean occupying the larger segment with an input of total volume 77.07% and total value 78.58%. North America managed to secure the remainder of the Shingles market with an input of total volume 22.93% and total value 21.42%. The month of Oct 13 when compared against the same period of Sept 13 has shown a positive increase in the export of Shingles by total volume 30.12% and total value 70.47%.

Shingles exported for Oct 2013

Destination	Volume exported by Country (m ³)	Total Value (US\$)
CARIBBEAN		
Antigua & Barbuda	13.64	12,710.00
Bahamas	67.80	80,880.00
French West Indies	24.20	23,100.00
Martinique	4.10	4,500.00
Turks & Caicos Islands	24.20	29,230.00
NORTH AMERICA		
USA	40.47	41,000.00
Grand Total	174.41	191,420.00

3.5 PLYWOOD EXPORT

Analysis of Quantity and Value

Plywood made a valuable contribution towards the total export earnings during the month of Oct 13. Central America market offered a strong contribution of total volume 85.80% and total value 85.11%. South America occupied the remainder of the market with total volume 14.20% and total value 14.89%. The month of Oct 13 when compared to the previous period of Sept 13 has shown a notable increase in the export of Plywood by total volume 49.51% and total value 40.46%.

Plywood exported for Oct 2013

Destination	Volume exported by Country (m³)	Total Value (US\$)
CENTRAL AMERICA		
Belize	433.40	213,470.51
SOUTH AMERICA		
Suriname	71.75	37,339.89
Grand Total	505.15	250,810.40

3.6 OTHER VALUE ADDED PRODUCTS

Analysis of Quantity and Value

Value Added Products performance on the export market was fairly good and made a valuable contribution towards the total export earnings during the month of Oct 13. Doors, NTFPs and windows all made a sterling positive contribution towards the total export earnings. There were also other contributions from indoor furniture, mouldings and wooden utensils which made a fair contribution during the period under review.

Destination	Volume exported by Country (pcs)	Total Value (US\$)
DOORS		
CARIBBEAN		
St. Kitts	37.00	16,975.00
St. Lucia	5.00	275.00
Grand Total	42.00	17,250.00

Destination	Volume exported by Country (pcs)	Total Value (US\$)
MOULDINGS		
CARIBBEAN		
St. Vincent	437.69	868.38
Grand Total	437.69	868.38

Destination	Volume exported by Country (pcs)	Total Value (US\$)
INDOOR FURNITURE		
CARIBBEAN		
St. Kitts	3.00	680.00
NORTH AMERICA		
USA	2.00	300.00
Grand Total	5.00	980.00

Value Added Products (Cont)

Destination	Volume exported by Country (pcs)	Total Value (US\$)
WINDOWS		
CARIBBEAN		
St. Kitts	12.00	3,450.00
Grand Total	12.00	3,450.00

Destination	Volume exported by Country (pcs)	Total Value (US\$)
NON TIMBER FOREST PRODUCTS		
CARIBBEAN		
Trinidad & Tobago	99.00	3,570.00
SOUTH AMERICA		
Suriname	34.00	7,940.00
Grand Total	133.00	11,510.00

Destination	Volume exported by Country (pcs)	Total Value (US\$)
WOODEN UTENSILS & ORNAMENTS		
CARIBBEAN		
Barbados	218.00	124.20
Grand Total	218.00	124.20

References

Guyana Forestry Commission, *Production Data*, Forest Monitoring Division.

Guyana Forestry Commission, *Export Data*, Forest Monitoring Division.