

# Forest Products Development & Marketing Council of Guyana, Inc.

## Market/Export Report

August 2010



### Produced By

Forest Products Development & Marketing  
Council of Guyana, Inc. (FPDMC)  
17 Access Road, Kingston  
Georgetown.  
Tel #: 592-223-5135-6

Email: [info@fpdmcguy.org](mailto:info@fpdmcguy.org)  
Website: [www.fpdmcguy.org](http://www.fpdmcguy.org)



## TABLE OF CONTENT

<b>1. SUMMARY OF MONTH PERFORMANCE</b>	<b>3</b>
<b>2. OVERVIEW OF EXPORTS FOR THE CURRENT PERIOD OF THE YEAR AS AGAINST THE PREVIOUS YEAR.</b>	<b>4</b>
<b>FPDMC Overview Summary Charts</b>	<b>5</b>
<b>3.0 ANALYSIS OF PRODUCTS EXPORTED BY DESTINATION</b>	<b>6</b>
<b>3.1. LOG EXPORT</b>	<b>6</b>
Analysis of Quantity and Value	6
<b>3.2. SAWNWOOD EXPORTS</b>	<b>7</b>
<b>DRESSED SAWN LUMBER EXPORT</b>	<b>7</b>
Analysis of Quantity and Value	7
<b>UNDRESSED SAWN LUMBER EXPORT</b>	<b>8</b>
Analysis of Quantity and Value	8
<b>3.3 ROUNDWOOD and FUELWOOD EXPORTS</b>	<b>9</b>
Piles: Analysis of Quantity and Value	9
Posts: Analysis of Quantity and Value	9
Poles: Analysis of Quantity and Value	9
Charcoal: Analysis of Quantity and Value	9
<b>3.4 SPLITWOOD (SHINGLES) EXPORT</b>	<b>11</b>
Analysis of Quantity and Value	11
<b>3.5 PLYWOOD EXPORT</b>	<b>12</b>
Analysis of Quantity and Value	12
<b>3.6 OTHER VALUE ADDED PRODUCTS</b>	<b>13</b>
Analysis of Quantity and Value	13
<b>REFERENCES</b>	<b>15</b>

# 1. Summary of Month Performance

## Quantity & Value of forest products exported for August 2010 compared to July 2010

Product	Unit	Aug 2010			July 2010		
		Quantity	Total Value US\$	% of Total	Quantity	Total Value US\$	% of Total
Logs	m <sup>3</sup>	20,647.00	3,142,561.22	56.68	6,707.11	902,273.95	23.47
Lumber- Dressed	m <sup>3</sup>	1,175.50	836,571.04	15.09	955.96	728,054.26	18.94
Undressed	m <sup>3</sup>	1,769.66	964,138.34	17.39	1,970.14	1,189,526.48	30.94
<b>Sawnwood (Dr &amp; Und)</b>		<b>2,945.16</b>	<b>1,800,709.38</b>		<b>2,926.10</b>	<b>1,917,580.74</b>	
Plywood	m <sup>3</sup>	318.71	137,149.85	2.47	1,271.42	523,990.58	13.63
Wallaba Poles	m <sup>3</sup>	83.00	27,387.50	0.49	163.20	69,835.00	1.82
Wallaba Post	m <sup>3</sup>	57.60	20,250.00	0.37	21.22	12,000.00	0.31
Piles	m <sup>3</sup>	201.75	61,979.89	1.12	447.04	187,230.81	4.87
Charcoal	kg	408.00	9,302.25	0.17	686.80	15,649.35	0.41
Shingles	m <sup>3</sup>	96.00	62,500.00	1.13	171.88	146,852.48	3.82
Indoor furniture	pcs	51.00	21,074.00	0.38	11.00	4,720.00	0.12
Doors	pcs	191.00	138,400.00	2.50	343.00	46,255.08	1.20
Door Components	pcs	10.00	600.00	0.01	93.00	5,962.50	0.16
Outdoor / Garden Furniture	pcs	7.00	1,455.00	0.03	36.00	2,888.00	0.08
Mouldings	m	-	-	-	562.66	1,845.98	0.05
Rails	pcs	-	-	-	-	-	-
Spindles	pcs	-	-	-	650.00	3,000.00	0.08
Spars	m <sup>3</sup>	-	-	-	-	-	-
Prefabricated Houses	pcs	-	-	-	1.00	2,230.00	0.06
Windows	pcs	266.00	115,678.00	2.09	4.00	180.00	0.00
Crafts	pcs	4.00	98.50	0.00	524.00	673.50	0.02
Firewood	m <sup>3</sup>	-	-	-	-	-	-
NTFPs	pcs	-	-	-	15.00	42.00	0.00
Other Builders Joinery	pcs	280.00	4,796.80	0.09	-	-	-
Wooden Utensils & Ornaments	pcs	-	-	-	957.00	831.95	0.02
<b>Total</b>			<b>5,543,942.39</b>			<b>3,844,041.92</b>	

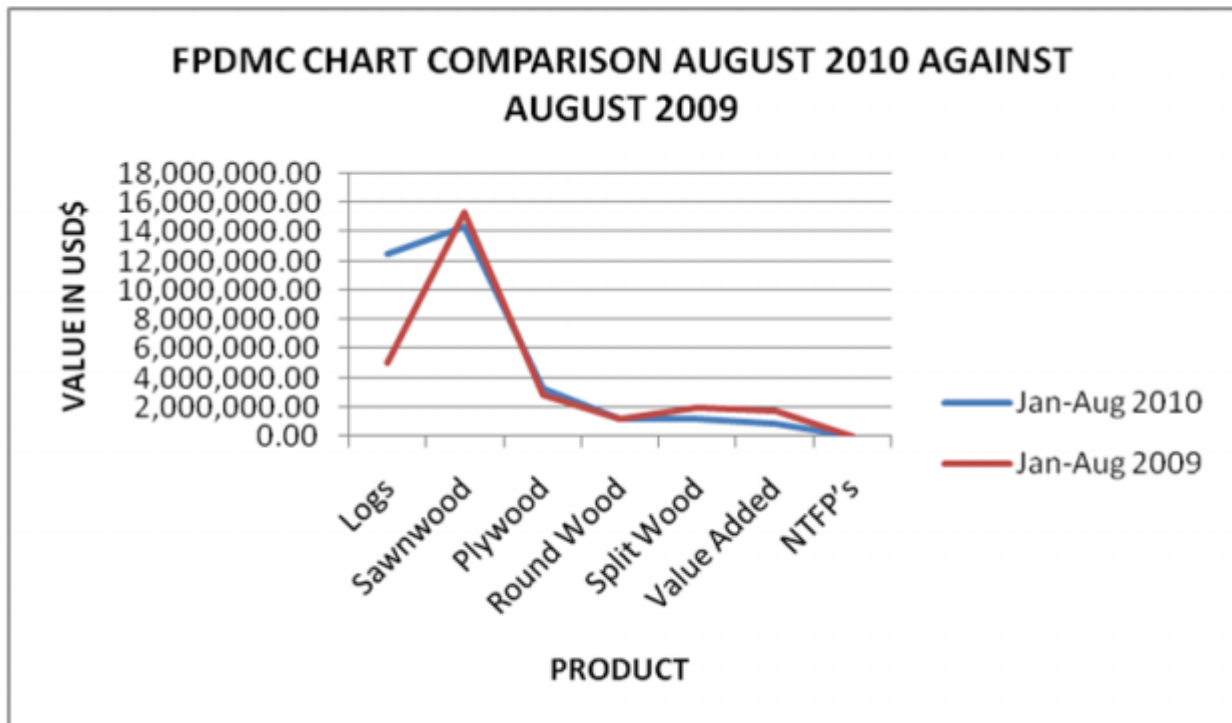
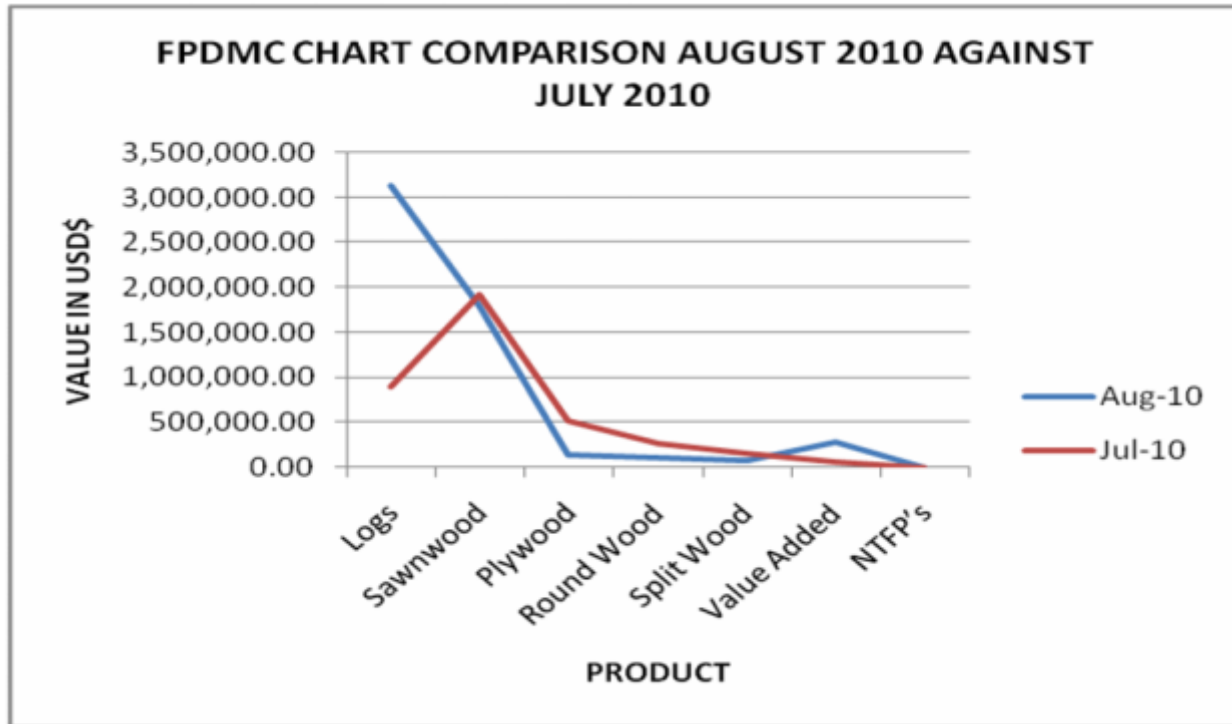
## 2. Overview of exports for the current period of the year as against the previous year.

### Quantity & Value of forest products exported Year to date 2010 compared to Year to date 2009

Products	Units	Jan – Aug 2010			Jan – Aug 2009		
		Quantity	Value (US\$ )	% of total	Quantity	Value (US\$)	% of total
Logs	m <sup>3</sup>	79,634.88	12,429,376.07	37.26	30,986.05	5,109,742.75	18.02
Dressed Lumber	m <sup>3</sup>	9,111.11	6,629,268.93	19.87	9,913.77	6,708,811.65	23.66
Undressed Lumber	m <sup>3</sup>	13,406.50	7,687,823.06	23.05	16,407.85	8,679,394.93	30.61
Plywood	m <sup>3</sup>	8128.69	3,242,569.41	9.72	7272.14	2,869,851.16	10.12
Wallaba Poles	m <sup>3</sup>	540.43	230,240.63	0.69	854.98	381,646.12	1.35
Wallaba Posts	m <sup>3</sup>	359.09	82,188.13	0.25	490.13	99,829.49	0.35
Piles	m <sup>3</sup>	2579.38	904,486.06	2.71	2482.48	754,808.23	2.66
Charcoal	kg	4,761.08	117,127.65	0.35	4726	116,053.31	0.41
Shingles	m <sup>3</sup>	1390.07	1,113,788.42	3.34	2099.19	1,873,010.45	6.61
Bedroom Furn / Indoor Furn	pcs	169	42278.35	0.13	391	20,590.54	0.07
Crafts	pcs	2807	4213.25	0.01	1300	2968.71	0.01
Doors	pcs	2433	437,363.49	1.31	5,400.00	498,548.45	1.76
Living Room / Outdoor Furn	pcs	1532	153,431.00	0.46	8,888.00	698,505.45	2.46
Mouldings	m	66,369.26	121,963.00	0.37	74,050.85	132,881.02	0.47
Rails	m <sup>3</sup>	-	-	-	34	255	0.00
Spindles	pcs	1236	4,281.45	0.01	9,704.00	298,383.40	1.05
Staves	pcs	-	-	-	-	-	-
Spars	m <sup>3</sup>	-	-	-	-	-	-
Firewood	m <sup>3</sup>	-	-	-	22.65	280	0.00
Door Components	pcs	204	9083.04	0.03	95	2426.41	0.01
Other builders Joinery	pcs	1011	12464.28	0.04	255	9,786.59	0.03
Other NTFP's	pcs	1084	7,883.05	0.02	1630.2	25,269.59	0.09
Windows	pcs	366	124605.04	0.37	1394	40,419.12	0.14
Prefab Houses	pcs	1	2230	0.01	2	20232.37	0.07
Wooden Utensils & Ornaments	pcs	2847	3275.69	0.01	1,563.00	6,687.94	0.02
<b>Total</b>			<b>33,359,940.00</b>			<b>28,350,382.68</b>	

The period of Aug 2010 has shown a major increase in total export earnings. The major contributor was **Logs** making a significant input of 56.68%; **Sawn Lumber** making a notable contribution with 32.48%; **Value Added Products** securing its place with 5.10%; **Plywood** absorbed 2.47%; **Roundwood and Fuelwood** contributed 2.15%, and **Shingles** captured a small portion of 1.13%. The month of Aug 10 as compared against July 10 has revealed a significant increase in total export earnings by 30.66% and the year to date figure continues to escalate for 2010 as against 2009 by 15.02%.

## FPDMC Overview Summary Charts



## 3.0 Analysis of Products Exported by Destination

### 3.1. LOG EXPORT

#### *Analysis of Quantity and Value*

The period of Aug 10 has shown an upsurge in the exportation of logs. The highest log market earner was India making a favourable contribution of total volume by 72.30% and total value by 76.74%; followed by China making a notable contribution of total volume by 26.39% and total value by 22.22%. The Asian market was the major earner of logs making a sizeable contribution of total volume by 99.15% and total value by 99.38%. The remainder small portion of the market was secured by South America (Suriname) making a marginal contribution of total volume by 0.85% and total value by 0.62%. The period of Aug 10 when compared against the period of July 10 has shown a significant increase by total volume 67.52% and total value by 71.29%.

#### **Volume and Value of Logs exported for Aug 2010**

<b>Destination</b>	<b>Volume exported by Country (m<sup>3</sup>)</b>	<b>Total Value (US\$)</b>
<b>ASIA</b>		
China	5,449.09	698,334.12
India	14,927.93	2,411,658.96
Taiwan	94.56	13,213.94
<b>SOUTH AMERICA</b>		
Suriname	175.42	19,354.20
<b>GRAND TOTAL</b>	<b>20,647.00</b>	<b>3,142,561.22</b>

## 3.2. SAWNWOOD EXPORTS

### DRESSED SAWN LUMBER EXPORT

#### Analysis of Quantity and Value

The period Aug 10 has revealed that the Caribbean continues to show a positive growth trend in Dress Sawn Lumber as the leader in the market with a positive contribution of total volume by 60.94% and total value by 60.85%. The second top earner was Asia making a notable contribution of total volume by 30.23% and total value by 23.35%. Dress sawn lumber was supported by other markets such as New Zealand and USA making a combined contribution of total volume by 8.83% and total value by 15.80%. The individual top earner was Barbados making a significant contribution to the dressed sawn lumber market by total volume 29.70% and total value by 30.80%. The month of Aug 10 as compared against July 10 has shown a positive increase in contribution by total volume 18.68% and total value by 12.97%.

#### Dressed Lumber exported for August 2010

Destination	Volume exported by Country (m <sup>3</sup> )	Total Value (US\$)
<b>ASIA</b>		
China	355.32	195,380.34
<b>CARIBBEAN</b>		
Anguilla	3.54	2,296.53
Barbados	349.13	257,636.98
French West Indies	25.01	18,739.77
Grenada	48.75	32,352.70
St. Lucia	80.47	59,559.24
St. Vincent	191.01	126,469.24
T & T	15.48	9,942.77
British Virgin Islands	2.97	2,079.00
<b>OCEANIC</b>		
New Zealand	39.33	27,870.46
<b>NORTH AMERICA</b>		
U.S.A	64.50	104,244.01
<b>Grand Total</b>	<b>1,175.50</b>	<b>836,571.04</b>

## **UNDRESSED SAWN LUMBER EXPORT**

### **Analysis of Quantity and Value**

The period of Aug 10, Europe continues to show positive growth trends in the Undressed Sawn Lumber making a significant contribution in total volume by 51.92% and total value by 48.59%. The Caribbean took second place in the market with a notable contribution with total volume of 13.30% and total value of 15.74%. The Asian market also made a similar and positive contribution with total volume of 13.03% and total value of 14.55%. The remainder of the market share was occupied by Latin America and Oceanic (New Zealand) when combined made a positive contribution with total volume by 21.75% and total value by 21.11%. Individual top earner was Netherlands making a significant contribution of total volume by 44.34% and total value by 39.50%. The comparable month of Aug 10 and July 10 has shown that undressed sawn lumber has decreased by total volume 10.18% and total value by 18.95%.

### **Undressed Lumber exported for August 2010**

<b>Destination</b>	<b>Volume exported by Country (m<sup>3</sup>)</b>	<b>Total Value (US\$)</b>
<b>ASIA</b>		
China	79.06	45,459.50
United Arab Emirates (U.A.E)	60.74	42,900.25
Taiwan	90.85	51,970.23
<b>CARIBBEAN</b>		
Antigua & Barbuda	3.77	1,520.00
Barbados	28.91	23,045.29
British Virgin Islands (B.V.I)	19.68	11,808.00
Grenada	20.54	11,712.30
Martinique	21.72	13,467.02
St. Kitts	35.24	23,169.06
St. Lucia	13.93	7,395.06
St. Vincent	39.83	32,681.76
T & T	51.83	26,976.78
<b>EUROPE</b>		
Italy	36.00	25,200.00
Netherlands	784.65	380,871.00
United Kingdom	98.14	62,416.09
<b>LATIN AMERICA</b>		
Costa Rica	4.86	3,154.86
Cuba	220.18	94,341.12
<b>OCEANIC</b>		
New Zealand	159.74	106,050.02
<b>Grand Total</b>	<b>1,769.66</b>	<b>964,138.34</b>



### 3.3 ROUNDWOOD and FUELWOOD EXPORTS

#### ***Piles: Analysis of Quantity and Value***

**Piles** market was secured by Europe making a sterling contribution of total volume by 87.19% and total value by 93.79%. Individual top earner was the Netherlands making a positive contribution of total volume by 47.54% and total value by 59.24%. The month of Aug 10 as compared against July 10 has revealed that there was a decrease by total volume 54.86% and total value by 66.90%.

#### ***Posts: Analysis of Quantity and Value***

**Posts** market was the Caribbean, Barbados making a notable contribution to the export earnings. The month of Aug 10 as compared against July 10 has shown an increase in export contribution by total volume 63.16% and total value by 40.74%.

#### ***Poles: Analysis of Quantity and Value***

**Poles** only market was Dominica making a positive contribution to the export earnings. The comparable period of Aug 10 and July 10 has revealed a decrease in Poles by total volume and total value 49.14% and 61.18%.

#### ***Charcoal: Analysis of Quantity and Value***

**Charcoal** market was the Caribbean with Trinidad being the higher contributor with total volume by 66.67% and total value by 66.67%. The month of Aug 10 as compared against July 10 has shown a decrease in the export of Charcoals by total volume 40.59% and total value by 40.56%.

Destination	Volume exported by Country (m <sup>3</sup> )	Total Value (US\$)
<b>PILES</b>		
<b>EUROPE</b>		
Denmark	16.67	6,100.80
Germany	23.94	6,763.05
Italy	39.39	8,553.40
Netherlands	95.91	36,714.64
<b>NORTH AMERICA</b>		
U.S.A	25.84	3,848.00
<b>Grand Total</b>	<b>201.75</b>	<b>61,979.89</b>

**ROUNDWOOD and FUELWOOD EXPORTS (CONT)**

Destination	Volume exported by Country (m <sup>3</sup> )	Total Value (US\$)
<b>POSTS</b>		
<b>CARIBBEAN</b>		
Barbados	37.70	9,650.00
Martinique	19.90	10,600.00
<b>Grand Total</b>	<b>57.60</b>	<b>20,250.00</b>

Destination	Volume exported by Country (m <sup>3</sup> )	Total Value (US\$)
<b>POLES</b>		
<b>CARIBBEAN</b>		
Dominica	83.00	27,387.50
<b>Grand Total</b>	<b>83.00</b>	<b>27,387.50</b>

Destination	Volume exported by Country (kg)	Total Value (US\$)
<b>CHARCOAL</b>		
<b>CARIBBEAN</b>		
French West Indies	136.00	3,100.75
Trinidad & Tobago	272.00	6,201.50
<b>Grand Total</b>	<b>408.00</b>	<b>9,302.25</b>

### 3.4 SPLITWOOD (SHINGLES) EXPORT

#### Analysis of Quantity and Value

The month of Aug 10, has seen that **Shingles** continue to show a positive trend in the Caribbean making it a top earner with notable contribution of total volume by 58.33% and total value by 71.20%. The other market was secured by Costa Rica making a contribution of total volume 41.67% and total value of 28.80%. The month of Aug 10 as compared against July 10 has shown a decrease in the export of Shingles market by total volume of 44.15% and total value of 57.44%.

#### Shingles exported for August 2010

Destination	Volume exported by Country (m <sup>3</sup> )	Total Value (US\$)
<b>CARIBBEAN</b>		
Anguilla	12.00	5,400.00
Antigua & Barbuda	13.00	5,850.00
Bahamas	11.00	8,750.00
St. Kitts	20.00	24,500.00
<b>LATIN AMERICA</b>		
Costa Rica	40.00	18,000.00
<b>Grand Total</b>	<b>96.00</b>	<b>62,500.00</b>

### 3.5 PLYWOOD EXPORT

#### *Analysis of Quantity and Value*

**Plywood** market for the month of Aug 10 has shown that Suriname was the leader making a notable contribution with total volume by 81.58% and total value by 80.42% accounting for than three-quarters of the market share of Plywood. The remainder of the Plywood market was secured by the Caribbean making small contribution with total volume by 18.42% and total value by 19.58%. The comparable period of Aug 10 and July 10 has revealed that there decrease in Plywood by total volume 74.93% and total value by 73.83%.

#### **Plywood exported for August 2010**

<b>Destination</b>	<b>Volume exported by Country (m<sup>3</sup>)</b>	<b>Total Value (US\$)</b>
<b>CARIBBEAN</b>		
St. Lucia	1.13	594.50
Trinidad & Tobago	57.57	26,260.67
<b>SOUTH AMERICA</b>		
Suriname	260.01	110,294.68
<b>Grand Total</b>	<b>318.71</b>	<b>137,149.85</b>

### 3. 6 OTHER VALUE ADDED PRODUCTS

#### Analysis of Quantity and Value

**Value Added Products** for the month of Aug 2010 was noteworthy to the export earnings. Some of the major contributions were from doors contributing 2.50% and windows contributing 2.09% of total export value earnings. . Other contributions were from indoor and outdoor furniture, other builders' joinery and crafts. The Caribbean market was the leading destination for these well designed and crafted products. The total contribution of value added products amounted to 5.10% of the total export earnings.

Destination	Volume exported by Country (Pcs)	Total Value (US\$)
<b>DOORS</b>		
<b>CARIBBEAN</b>		
Barbados	67.00	7,270.00
British Virgin Islands	1.00	600.00
St. Vincent	123.00	130,530.00
<b>Grand Total</b>	<b>191.00</b>	<b>138,400.00</b>

Destination	Volume exported by Country (Pcs)	Total Value (US\$)
<b>DOOR COMPONENTS</b>		
<b>CARIBBEAN</b>		
Barbados	10.00	600.00
<b>Grand Total</b>	<b>10.00</b>	<b>600.00</b>

Destination	Volume exported by Country (Pcs)	Total Value (US\$)
<b>OTHER BUILDERS JOINERY</b>		
<b>CARIBBEAN</b>		
St. Lucia	280.00	4,796.80
<b>Grand Total</b>	<b>280.00</b>	<b>4,796.80</b>

## OTHER VALUE ADDED PRODUCTS (CONT)

Destination	Volume exported by Country (Pcs)	Total Value (US\$)
<b>INDOOR FURNITURE</b>		
<b>CARIBBEAN</b>		
Barbados	1.00	1,000.00
St. Kitts	22.00	6,324.00
St. Lucia	25.00	13,500.00
Trinidad & Tobago	3.00	250.00
<b>Grand Total</b>	<b>51.00</b>	<b>21,074.00</b>

Destination	Volume exported by Country (m)	Total Value (US\$)
<b>OUTDOOR GARDEN FURNITURE</b>		
<b>CARIBBEAN</b>		
St. Kitts	7.00	1,455.00
<b>Grand Total</b>	<b>7.00</b>	<b>1,455.00</b>

Destination	Volume exported by Country (Pcs)	Total Value (US\$)
<b>WINDOWS</b>		
<b>CARIBBEAN</b>		
St. Vincent	266.00	115,678.00
<b>Grand Total</b>	<b>266.00</b>	<b>115,678.00</b>

Destination	Volume exported by Country (Pcs)	Total Value (US\$)
<b>CRAFTS</b>		
<b>CARIBBEAN</b>		
Barbados	4.00	98.50
<b>Grand Total</b>	<b>4.00</b>	<b>98.50</b>

## References

Guyana Forestry Commission, *Production Data*, Forest Monitoring Division.

Guyana Forestry Commission, *Export Data*, Forest Monitoring Division.